

TROMBONE

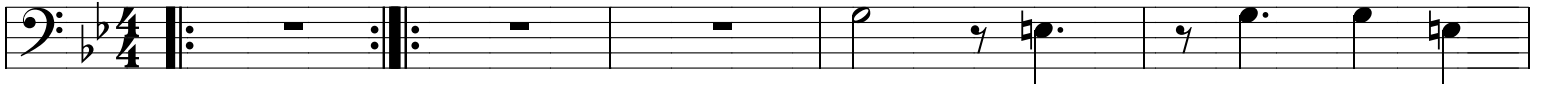
Sao Juel

A MYTHICAL LAND IN BRAZIL
ORCHESTRATED FOR CRUZAO GRUPO MONSTRUOSO

OPEN
2 bass
wank

 **A** ON CUE

COMPOSED & ARRANGED BY :
BROWMAN ALI



To Coda
(ON CUE) \oplus



6

B



10



14



18



22

C



26



30

OPEN FOR RAPPERS

D HORNS ON CUE

36

40

BREAKDOWN - on cue

E trumpets 2nd X only, all vocalists on mouth percussion, basses out

44

48

F Horn SOLO

B^bmaj⁹ **Fm⁹** **A^bmaj⁹** **E^bsus⁴**

52

G^bmaj⁹ **D^bm⁹** **Cm⁹** **F⁹sus⁴**

60

G BROWN blowing

D.S. al Coda
(on cue)

68

⊕ Coda

Triangle
2

72