

BARI

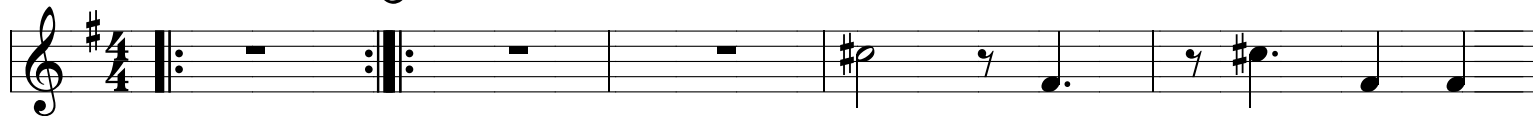
Sao Jrel

A MYTHICAL LAND IN BRAZIL
ORCHESTRATED FOR CRUZAO GRUPO MONSTRUOSO

OPEN
2 bass
wank

 **A** ON CUE

COMPOSED & ARRANGED BY :
BROWMAN ALI

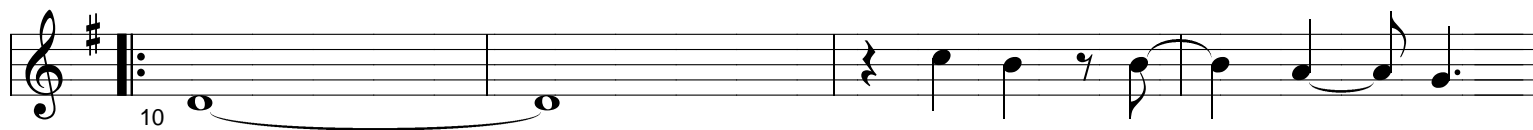


To Coda
(ON CUE) 

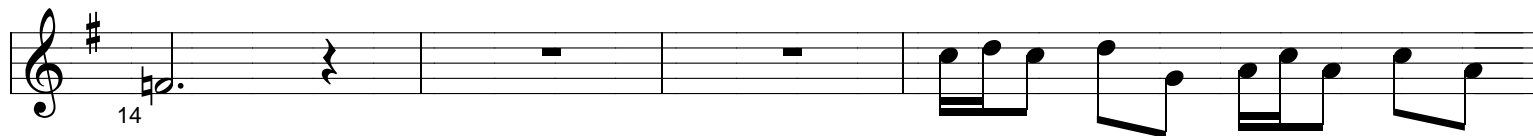


6

B



10



14



18

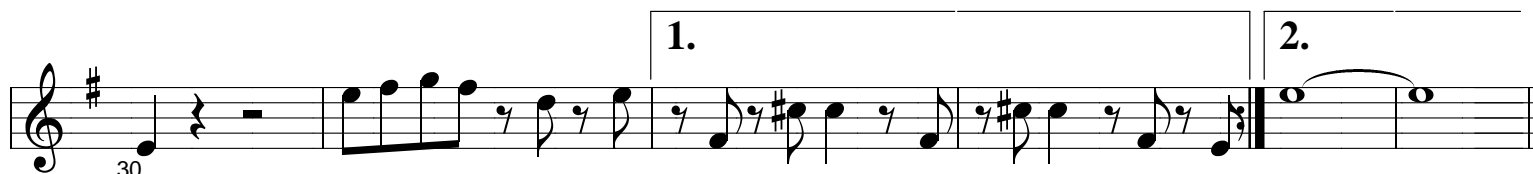


22

C



26



30

OPEN FOR RAPPERS

D HORNS ON CUE

E BREAKDOWN - on cue
trumpets 2nd X only, all vocalists on mouth percussion, basses out

F Horn SOLO

Gmaj⁹

Dm⁹

Fmaj⁹

Csus⁴

E^bmaj⁹

B^bm⁹

Am⁹

D⁹sus⁴

G BROWN blowing

D.S. al Coda
(on cue)

Coda

Triangle
2