

# BASS

# Juggernaut

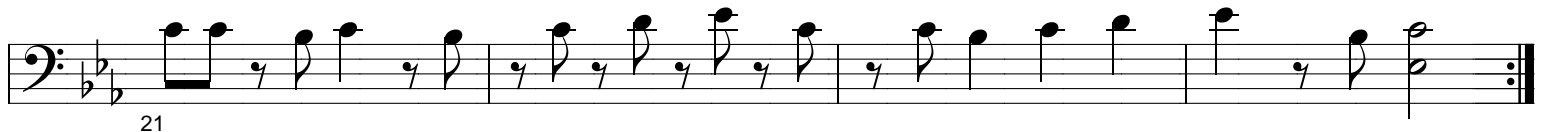
COMPOSED & ARRANGED BY :  
NICK "BROWMAN" ALI



## A



## B



## C



## D



## E



D.S.

41

**F**

Musical notation for section F, measures 47-58. The notation is in bass clef, 4/4 time, and B-flat major. It consists of four staves of music. Measure numbers 47, 51, 55, and 59 are indicated at the start of their respective staves. The music features a mix of eighth and quarter notes with various rests.

**G** 59 Trumpet Solo

Musical notation for section G, measures 63-66. The notation is in bass clef, 4/4 time, and B-flat major. It consists of two staves of music. Measure numbers 63 and 67 are indicated at the start of their respective staves. The music features a mix of quarter and eighth notes with various rests.

**H** 67 Interlude

Musical notation for section H, measures 71-74. The notation is in bass clef, 4/4 time, and B-flat major. It consists of two staves of music. Measure numbers 71 and 75 are indicated at the start of their respective staves. The music features a mix of quarter and eighth notes with various rests.

**I** 75 Drum solo

Musical notation for section I, measures 79-82. The notation is in bass clef, 4/4 time, and B-flat major. It consists of two staves of music. Measure numbers 79 and 83 are indicated at the start of their respective staves. The music features a mix of quarter and eighth notes with various rests.

**J**

Musical notation for section J, measures 87-90. The notation is in bass clef, 4/4 time, and B-flat major. It consists of two staves of music. Measure numbers 87 and 91 are indicated at the start of their respective staves. The music features a mix of quarter and eighth notes with various rests.

**K** Trumpet runs

Musical notation for section K, measures 95-99. The notation is in bass clef, 4/4 time, and B-flat major. It consists of two staves of music. Measure numbers 95 and 99 are indicated at the start of their respective staves. The music features a mix of quarter and eighth notes with various rests.