

BASS

Brownian Motion

$\text{♩} = 175$

COMPOSED & ARRANGED BY :
BROWNMAN ALI, CHRIS LESSO, IAN DE SOUZA

A A1 - Brown plays bass pedal
A2 - Brown plays wah-wah

Musical notation for section A, measures 1-6. Measure 1 starts with a repeat sign. Measure 5 is marked with a '5' below the staff.

B 1/2 time Funk section - Ian does whatevs,
Brown contines to play bassline

Musical notation for section B, measures 7-20. Measure 13 is marked with a '13' below the staff. Measure 17 is marked with a '17' below the staff. Measure 21 is marked with a '21' below the staff.

C Ian + Lesso: D'n'B w/ montuno for 8 bars THEN Brown: sparse lines

Musical notation for section C, measures 21-30. Measure 25 is marked with a '25' below the staff. Measure 29 is marked with a '29' below the staff.

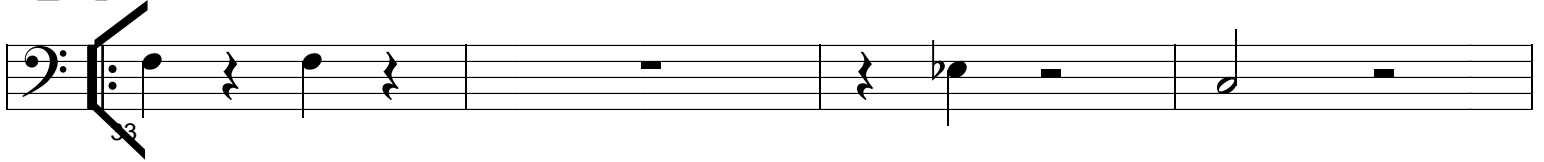
FORM: A1, B, A2, B, C, D

COMPOSED AND ARRANGED BY MODUS FACTOR, SOCAN/ASCAP, COPYRIGHT 2014

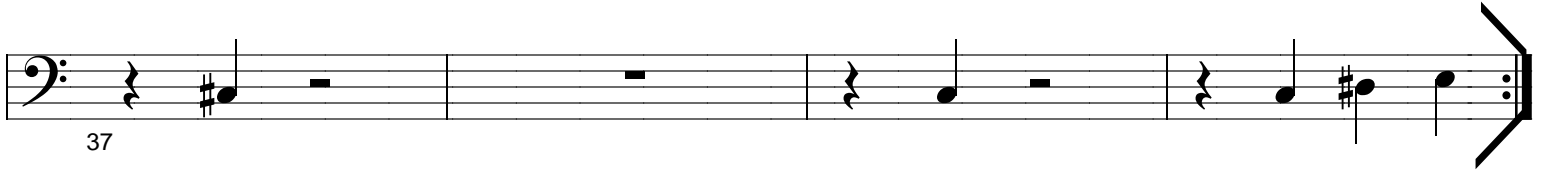
TRANSCRIPTIONS & COPYING BY BROWNMAN MUSIC INC. 416-738-9449

www.brownan.com

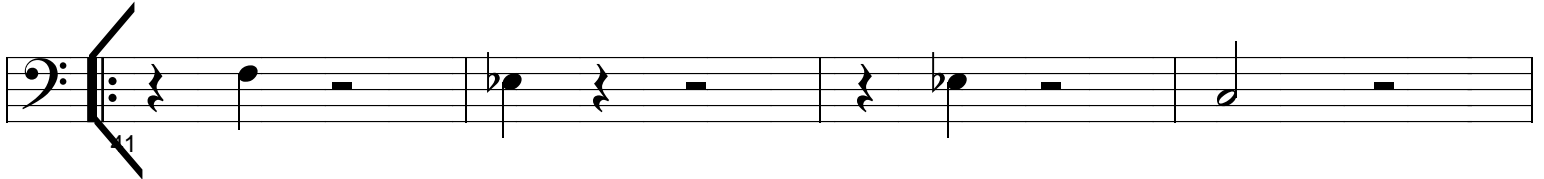
D1 DRUM SOLO SHOTS



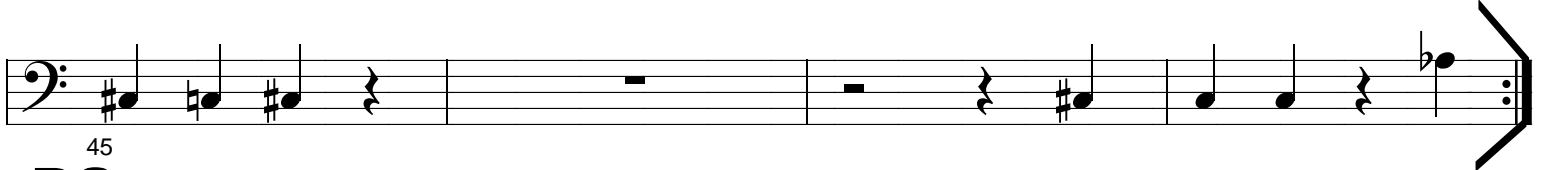
Musical staff 1 for D1 Drum Solo Shots, measures 33-36. The staff is in bass clef with a key signature of one flat. It contains quarter notes, eighth notes, and rests.



Musical staff 2 for D1 Drum Solo Shots, measures 37-40. The staff is in bass clef with a key signature of one flat. It contains quarter notes, eighth notes, and rests.

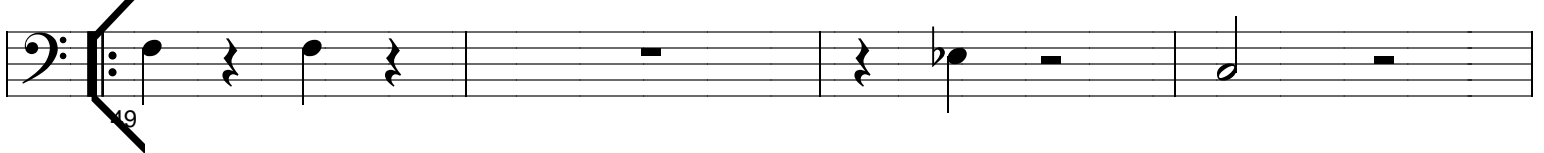


Musical staff 3 for D1 Drum Solo Shots, measures 41-44. The staff is in bass clef with a key signature of one flat. It contains quarter notes, eighth notes, and rests.

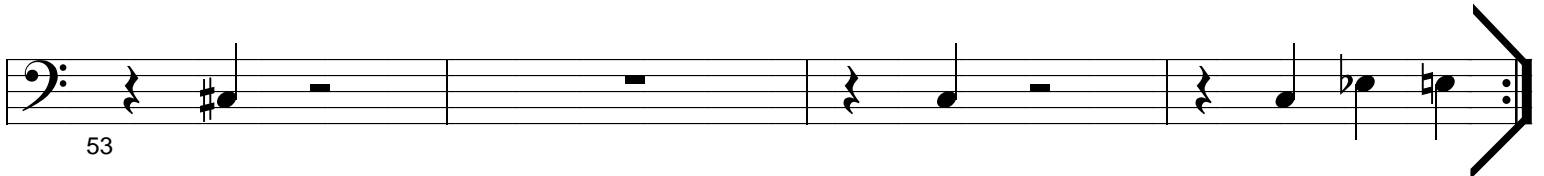


Musical staff 4 for D1 Drum Solo Shots, measures 45-48. The staff is in bass clef with a key signature of one flat. It contains quarter notes, eighth notes, and rests.

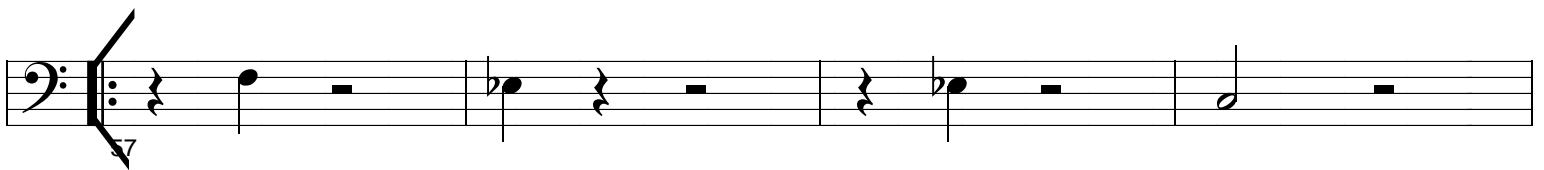
D2



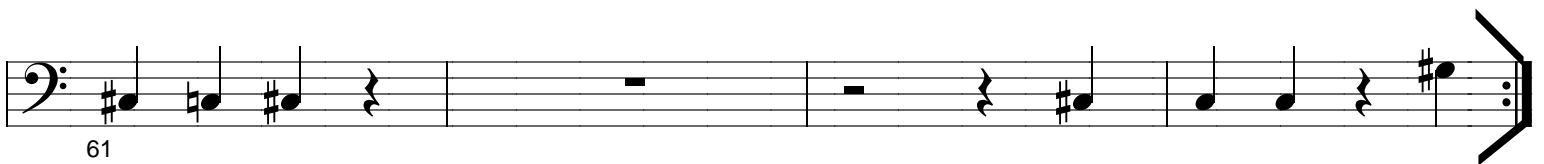
Musical staff 5 for D2 Drum Solo Shots, measures 49-52. The staff is in bass clef with a key signature of one flat. It contains quarter notes, eighth notes, and rests.



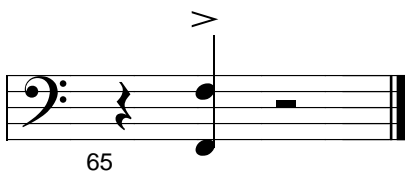
Musical staff 6 for D2 Drum Solo Shots, measures 53-56. The staff is in bass clef with a key signature of one flat. It contains quarter notes, eighth notes, and rests.



Musical staff 7 for D2 Drum Solo Shots, measures 57-60. The staff is in bass clef with a key signature of one flat. It contains quarter notes, eighth notes, and rests.



Musical staff 8 for D2 Drum Solo Shots, measures 61-64. The staff is in bass clef with a key signature of one flat. It contains quarter notes, eighth notes, and rests.



Musical staff 9 for D2 Drum Solo Shots, measures 65-66. The staff is in bass clef with a key signature of one flat. It contains quarter notes, eighth notes, and rests.

BASS

Carlu

Soundscape.

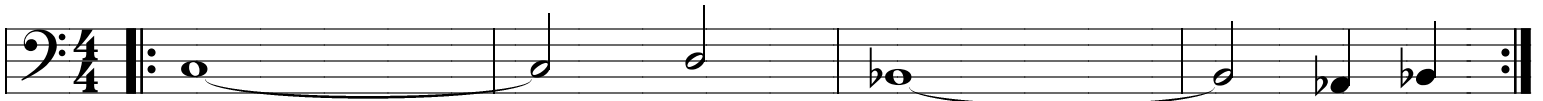
Brown plays bass.

Ian plays high loopy stuff

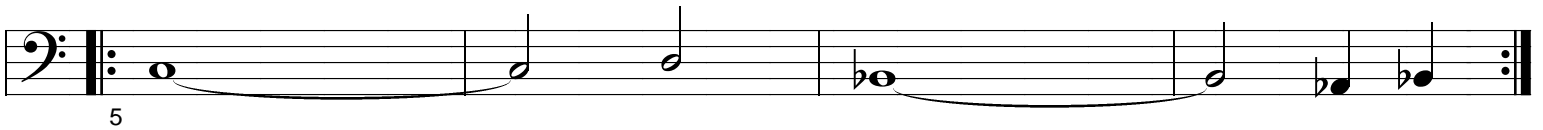
Lesso on psydo-samba-ish snare.

COMPOSED & ARRANGED BY :
BROWNMAN ALI, CHRIS LESSO, IAN DE SOUZA

A1



A2 Add 1/2-time back-beat - band reacts



B Lesso - KONOKOL & hi-hat unison

Dm **C**

B \flat /F **A 7**

BASS

House

COMPOSED & ARRANGED BY :
BROWNMAN ALI, CHRIS LESSO, IAN DE SOUZA

A Brown plays soundscape effecty stuff

Section A consists of two staves of music in 4/4 time. The first staff contains measures 1 through 8, featuring a rhythmic pattern of eighth notes with a 'z' symbol above them, indicating a specific articulation or effect. The second staff continues the pattern from measure 5 to 8.

B

Section B consists of one staff of music in 4/4 time, containing measures 9 through 12. The music features a sequence of eighth notes with a 'z' symbol above them, and a key signature change to one flat (Bb) is indicated by a flat symbol on the first measure.

Ian plays slapback w/ delay
Brown echoes similarly w/ pitchfactor...
build to breakdown

C

Section C consists of one staff of music in 4/4 time, containing measures 13 through 16. The music features a complex rhythmic pattern with many sixteenth notes and a key signature change to two flats (Bb and Eb) indicated by flat symbols on the first measure.

D BREAKDOWN - trumpet & drums only / Ian on Kaos

Section D consists of one staff of music in 4/4 time, containing measures 17 through 20. The staff is mostly empty, with a single whole note in the first measure, indicating a breakdown period.

E - out Everyone plays figures

Section E consists of one staff of music in 4/4 time, containing measures 21 through 24. The music features a complex rhythmic pattern with many sixteenth notes and a key signature change to two flats (Bb and Eb) indicated by flat symbols on the first measure.

BASS

Monster Funk

COMPOSED & ARRANGED BY :
BROWNMAN ALI, CHRIS LESSO, IAN DE SOUZA

A Bass First - Melody after



B

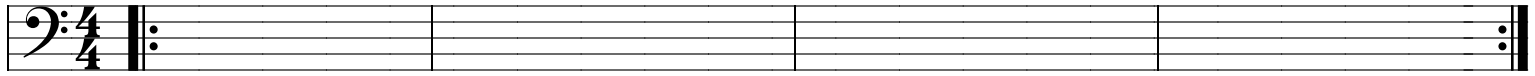


BASS

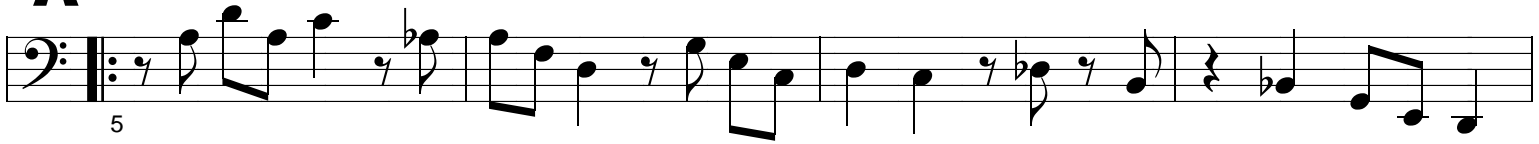
Now & Zen

COMPOSED & ARRANGED BY :
BROWNMEN ALI, CHRIS LESSO, IAN DE SOUZA

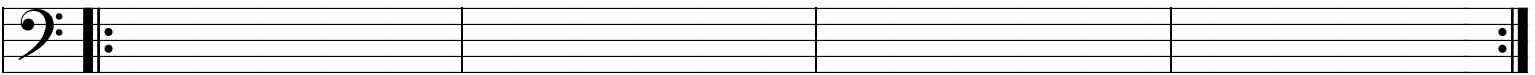
Chris & Ian OPEN Intro - Hi-hat ,cross-stick, bass drum



A



B1

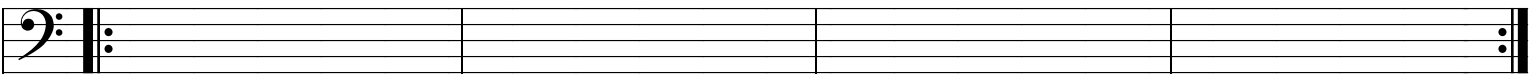


B2



C

Drum & Bass



FORM:

Intro

Ax4

B1 (open)

B2 (melody

solos)

C (solos)

Ax4 (out - last 2x drum solo)

BASS

INTRO

Photek

COMPOSED & ARRANGED BY :
BROWNMAN ALI, CHRIS LESSO, IAN DE SOUZA

Musical notation for the Intro section, measures 1-8. The key signature has one flat (Bb) and the time signature is 4/4. The notation consists of eighth and quarter notes with rests.

A Horn Melody 1

Musical notation for Horn Melody 1, measures 9-16. The notation is identical to the Intro section.

B Horn Melody 2

Musical notation for Horn Melody 2, measures 17-24. The notation is identical to the Intro section.

Musical notation for Horn Melody 2, measures 25-32. The notation is identical to the Intro section.

C Horn + Bass

Musical notation for Horn + Bass, measures 33-40. The notation is identical to the Intro section.

D

Musical notation for section D, measures 41-48. The notation features a melodic line with eighth and quarter notes, including some slurs.

E Ian plays 8th note slapback w/ delay Brown plays bass

Musical notation for section E, measures 49-56. The notation shows a series of rests, indicating that the bassist is playing a steady bass line while Ian plays a slapback with delay.

F Ian improvises upper 8va chords Brown plays bass

Musical notation for section F, measures 57-60. The notation shows a series of rests, indicating that the bassist is playing a steady bass line while Ian improvises upper 8va chords.

G A^b B^b Cm E^b7

Musical notation for section G, measures 61-68. The notation shows a series of rests, indicating that the bassist is playing a steady bass line while Ian improvises upper 8va chords.

BASS

Purdie 7

COMPOSED & ARRANGED BY :
BROWNMAN ALI, CHRIS LESSO, IAN DE SOUZA

The image shows a single staff of music in bass clef, 7/4 time signature. The key signature has two flats (B-flat and E-flat). The music consists of a repeating rhythmic pattern of eighth and quarter notes. Above the staff, four chord symbols are placed: Fm7, Cm7, Fm7, and Cm7, corresponding to the first four measures of the piece. The piece ends with a double bar line.