

C^b lead sheet

Panic Attack

RYAN KISOR

Uptempo swing (♩ = ca. 276)

Chord progression: G♭maj7(#11) (♯11) A♭maj7 Bm11 G♭maj7(#11)

mf Bass walks*

Chord progression: B♭maj7(#11) (♯11) Cmaj7 E♭m11 B♭maj7(#11)

Chord progression: B♭7sus D♭maj7(#11) Bm11 A7 A♭maj7 G♭m7

Chord progression: F7(♯9) B♭7sus F7(♯9) B♭7sus

Chord progression: C7sus Bm11 G♭maj7(#11) A♭maj7(#11) B♭maj7(#11)

Chord progression: Bm11 A♭maj7(#11) G♭maj7(#11) E♭maj7 G♭maj7

Chord progression: A♭maj7(#11) Bm11 G♭maj7(#11)

Chord progression: [G♭maj7(#11)] (♯11) A♭maj7 Bm11 G♭maj7(#11)

Chord progression: B♭maj7(#11) (♯11) Cmaj7 E♭m11 B♭maj7(#11)

last time after repeat

* On first recording, Bass only plays hits throughout.
 On the second recording, Bass walks.

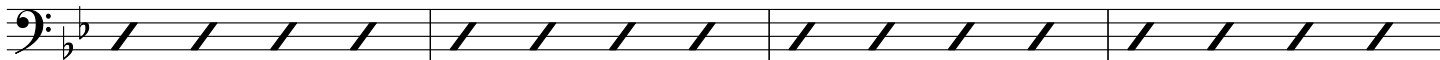
Solos

B \flat 7sus



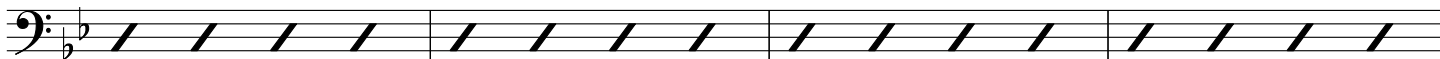
4-measure

D \flat maj7(#11)

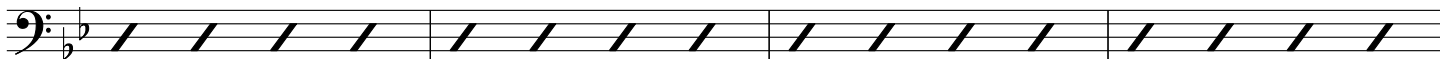


Bm11

A7

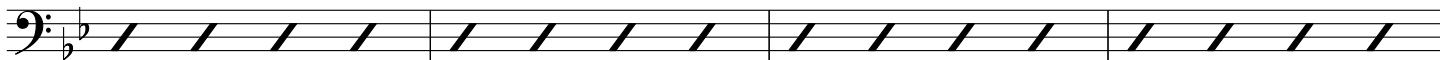


A \flat maj7



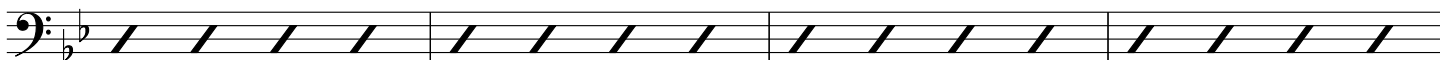
F \sharp m

F7(#9)



F \sharp m

F7(#9)

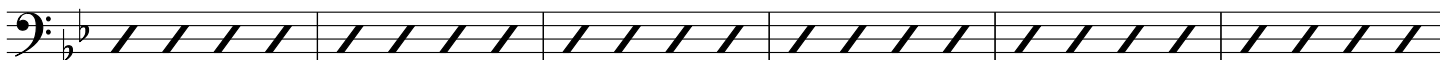


B \flat 7sus

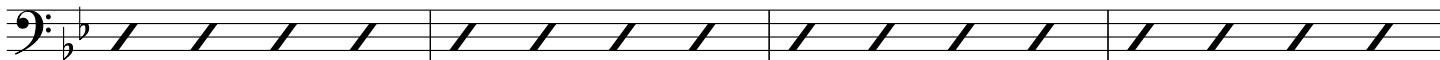
C7sus

Bm11

A7



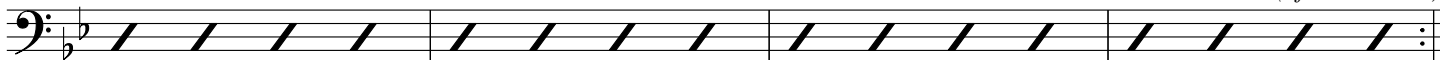
G \flat maj7(#11)



A \flat maj7(#11)

B \flat maj7(#11)

*D.S. $\text{al} \text{ } \oplus$
(after last solo)*



\oplus Coda

Cmaj7(#11)

E \flat m11

B \flat maj7(#11)

optional
B \flat 13sus
(//)

