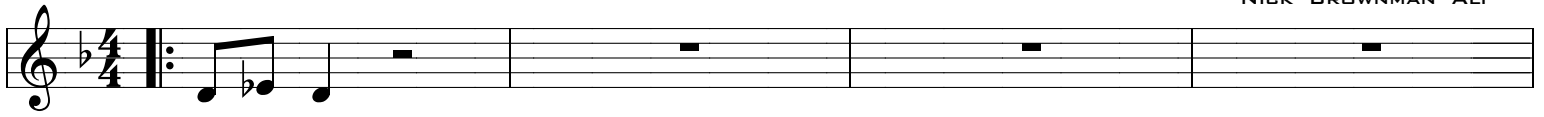


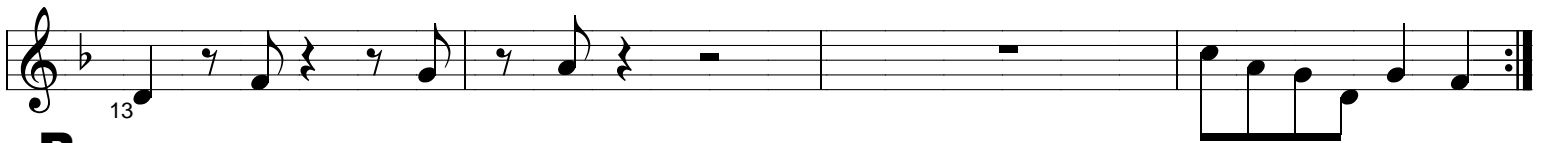
TRUMPET

Juggernaut

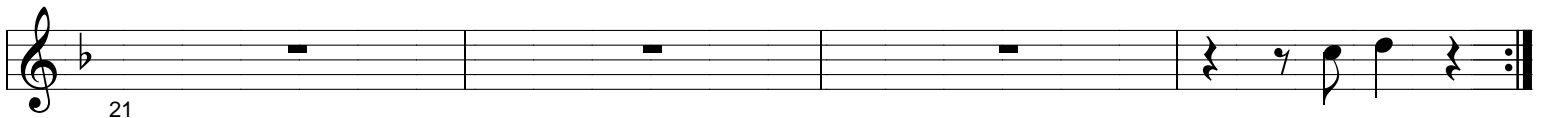
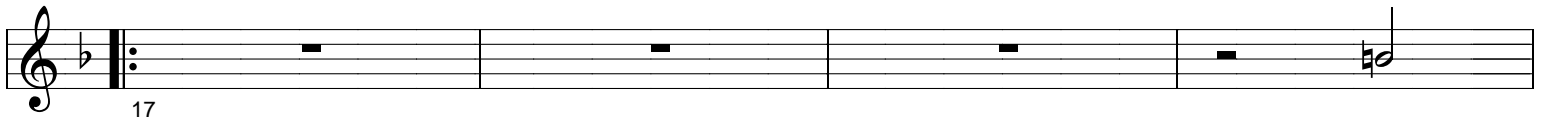
COMPOSED & ARRANGED BY :
NICK "BROWNMEN" ALI



A



B



C



D



E



D.S.

TRUMPET

F

Musical notation for section F, measures 47-60. The key signature has one flat (Bb) and the time signature is 4/4. Measure 47 starts with a repeat sign. The melody consists of eighth and quarter notes.

G SOLOS Gm7

Musical notation for section G, measures 63-66. The key signature has one flat (Bb) and the time signature is 4/4. Measures 63 and 64 are marked with a C7 chord and contain diagonal lines, indicating a drum solo.

H INTERLUDE - on cue (good luck!!)

Musical notation for section H, measures 71-75. The key signature has one flat (Bb) and the time signature is 4/4. The melody features eighth and quarter notes with various accidentals.

I Drum solo - open

Musical notation for section I, measures 76-78. The key signature has one flat (Bb) and the time signature is 4/4. Measures 76 and 77 contain diagonal lines, indicating a drum solo.

J on cue Dm

Musical notation for section J, measures 83-87. The key signature has one flat (Bb) and the time signature is 4/4. Measures 83-87 are marked with a Dm chord. Measure 84 is marked with an A7 chord, measure 85 with a C7 chord, and measure 86 with a Gm7 chord.

K

Musical notation for section K, measures 91-99. The key signature has one flat (Bb) and the time signature is 4/4. Measures 91-95 are marked with a D13(#11) chord. Measure 96 is marked with an 'on cue' instruction. Measure 99 ends with a double bar line and a repeat sign.